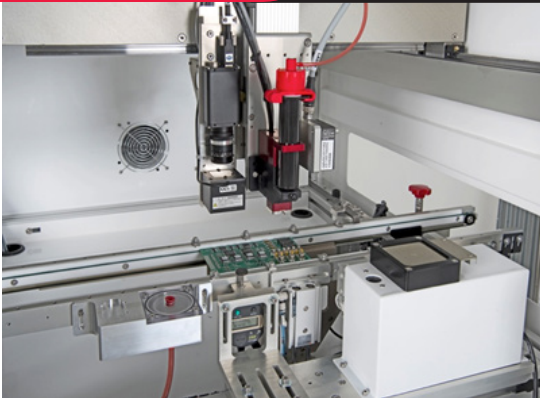




**WHERE
PRECISION
DRIVES
PRODUCTION**



SYSTEM SPECIFICATIONS

Gantry System Design

Closed loop brushless DC servo motors with optical encoders and ball screw slides on all axes

Work Area

1 Valve / Tool:
521 mm x 485 mm x 100 mm
(20.51" x 19.09" x 3.94")

XYZ Repeatability

±25 microns (±0.001")

Resolution

5 microns (0.0002")

Maximum Acceleration

1g

Footprint

847 mm x 1136.9 mm x 1606 mm
(33.35" x 44.76" x 63.23")

Programming Software

PathMaster® software with offline image import and programming capability

Delta 6 Selective Coating/Dispensing System

The Delta 6 is a new, reimagined flexible robotic conformal coating/dispensing system that is ideal for selective coating, potting, bead, and meter-mix dispensing applications. The Delta 6 features a robust overhead three-axis motion platform suitable for inline or batch operations.

While maintaining the preferred features of previous workcells, the Delta 6 has been designed with a slimmer footprint, improved structural and gantry rigidity for robustness, and easier access.

The Delta 6 has many options and integrated features including:

- Robotic system repeatability of 25 microns
- Patented servo-controlled optional four-axis motion featuring valve tilt and rotate
- Closed loop process control throughout gantry system
- Multiple dispensing applications or materials in one cell
- Onboard PC for unlimited program storage
- Exclusive PathMaster® programming environment

For more information, please contact PVA at info@pva.net or (518) 371-2684.



Delta 6

The Delta 6 is ideal for selective conformal coating and dispensing applications that require a high level of accuracy and repeatability in moderate to high volume manufacturing environments. It is a closed-loop robotic platform featuring optical encoder feedback on all axes.

Power 120V, 220V, 50-60 Hz
Air Supply 80 psi dry, unlubricated air

XYZ Specifications

Gantry System: Brushless DC servo motors
 Precision ball screw slides
XYZ Repeatability: ±25 microns (±0.001")
Maximum Speed (XYZ): 700/mm/sec (27.6"/sec)
Maximum Acceleration: 1g

Resolution: 5 microns (0.0002")

Payload Capacity: 11.36kg (25 lbs)

Board Handling

Conveyor Type: Flat belt or chain
Minimum Conveyor Width: 50 mm (1.97")
Maximum Conveyor Width: 500 mm (19.685")
Board Clearance Topside: 80 mm (3.15")
Board Clearance Underside: 80 mm (3.15")
Edge Clearance: 4.7 mm (0.185")

Transport Height: 940 mm - 965 mm (37" - 38")
Communications Protocol: SMEMA
Conveyor Options: Lift and locate, through hole pin, under board support

Conveyor Speed: Up to 24.4m/min (80ft/min)
Process Flow: Programmable right to left or left to right, bidirectional
Weight Limit: 5 pounds (belt)
 15 pounds (chain)

Standard Features

- PathMaster® Windows- based software
- FastPath™ offline image programming capability
- Onboard PC with flat screen monitor
- Remote teach pendant with trackball
- USB communication port
- Closed-loop low level exhaust notification (spray systems)

Optional Features:

- Servo 4th Axis motion featuring valve tilt & rotate
- Closed-loop material flow monitoring
- Inline material metering
- Bar code program selection
- Low level fluid sensor
- Valve and / or fluid heating
- Programming camera
- Active vision with XY correction
- Substrate heating – contact or non-contact
- Dispense zone weigh scale
- Multi-zone conveyor
- Conveyor auto width adjust

Fluid Applicators

- Spray Valves:** FCS300-ES, FCS300-R/F, FC100-CF
- Dispense Valves:** FC100-MC, FCM100, SB300
- Jetting Valve:** JDJ
- Auger Valves:** SV200, SVX
- Progressive Cavity Valves:** ProFlow 1K, ProFlow 2K

- Material Feed Options:**
- Syringe (1-55cc)
 - Cartridge feed (6-20 oz)
 - Pressure vessel
 - Drums, totes

Backside of Machine 80 - 100 PSI Dry compressed air required

Power drop required - See machine spec for voltage

