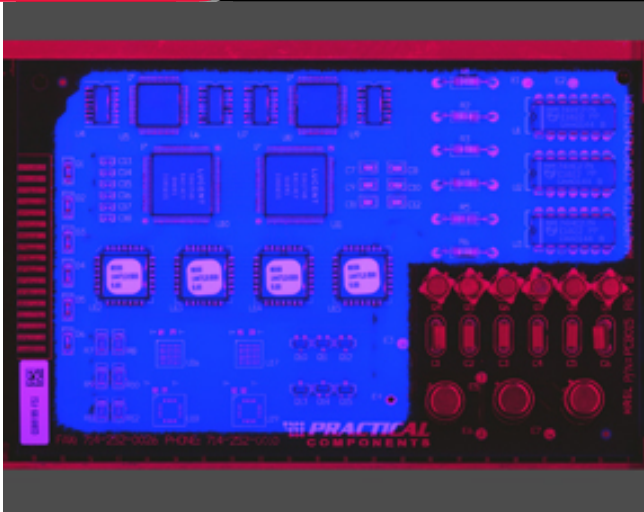




**WHERE  
PRECISION  
DRIVES  
PRODUCTION**



## **PVA 20/20 SPECIFICATIONS**

### **Viewable Area**

400mm wide x 300mm deep  
(17.72" wide x 12.99" deep)

### **Sensor Resolution**

0.021mm (0.0008")

### **Minimum Detection Size**

0.084mm (0.003")

### **Component Clearance**

35.56mm (1.4")

### **Estimated Scan Time**

Between 5 - 20 seconds

### **Depth of Field**

16mm (0.63")

### **Focus Distance**

*(Set at factory)*

Between 30 – 60mm

*(Between 0.59" – 1.77")*

### **Footprint**

847 mm x 1136.9 mm x 1606 mm

*(33.35" x 44.76" x 63.23")*

## **PVA 20/20 INSPECTION SYSTEM**

The PVA 20/20 inspects large areas of coated PCBs quickly to assure quality during the conformal coating processes. The system seamlessly works inline with PVA conformal coating systems to inspect UV fluorescent material for intended coverage and keep out areas. Inspection during the production process ensures continued productivity, allows the function to be fully documented and provides product traceability.

The PVA 20/20 is flexible and easy to program. Total area scan times are approximately 10-20 seconds, depending on the resolution of the scan, thus providing expeditious inspection for quality assurance.

Additional options available for the PVA 20/20 Inspection System:

- ▲ Auto width adjust conveyor
- ▲ Adjustable scanner height
- ▲ Barcode Scanner & P-select
- ▲ Data logging
- ▲ MES integration

For more information, please contact PVA at [info@pva.net](mailto:info@pva.net) or 1-518-371-2684.



One Mustang Drive  
Cohoes NY 12047  
tel 518 371 2684  
fx 518 371 2688  
[www.pva.net](http://www.pva.net)