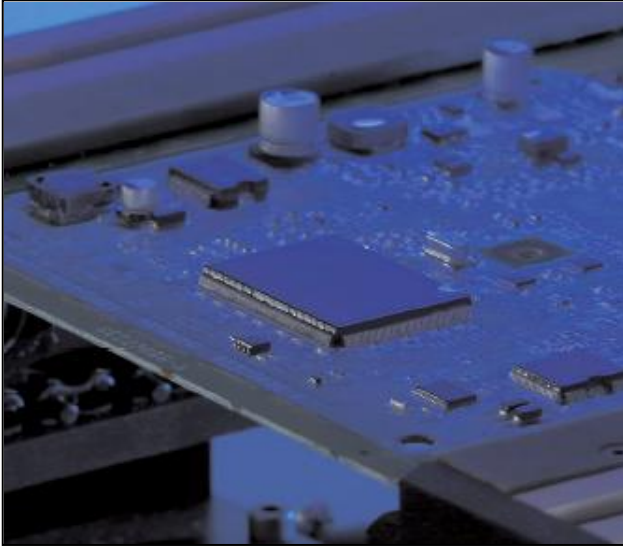




**WHERE  
PRECISION  
DRIVES  
PRODUCTION**



## SYSTEM SPECIFICATIONS

### Q Series Versions

**PVA-Q4**            **Transfer Conveyor**  
**PVA-IN4**        **Coating Inspection Conveyor**

#### Power Requirements:

120 V, 220 V +/- 10%, / 50-60 Hz

#### Conveyor Type:

Edge carry pin chain or belt

#### Conveyor Length:

1219mm (48in) Standard

#### Conveyor Speed:

Adjustable up to 24.4 m/min (80 ft/min)

#### Board / Pallet Width:

51 mm to 508 mm  
(2 in to 20 in)

#### Minimum Edge Clearance:

4.7 mm (0.185")

#### Conveyor Height:

940 mm to 965 mm from floor  
(37 in to 38 in, SMEMA standard)

#### Process Flow:

Programmable right to left or left to right

## Q Series Conveyor

The Q Series Transfer Conveyors are ideal for a wide range of part handling applications and can optimize material flow between processes. PVA conveyor systems can be used to transport bare board assemblies or pallet fixtures.

The Q Series features: edge carrying, variable speed pin chain or belt conveyor; SMEMA communication protocol; heavy-duty, modular construction; customizable conveyor lengths.

#### Options:

- ▲ Hand crank width adjust
- ▲ Servo width adjust
- ▲ Inspect/bypass control
- ▲ Lighting, white or UV (black light) LED
- ▲ Multi-zone configuration
- ▲ Barcode reader

For more information, please contact PVA at [info@pva.net](mailto:info@pva.net) or 1-518-371-2684.



**PVA-IN4**



**PVA-Q4**

One Mustang Drive  
Cohoes NY 12047  
tel 518 371 2684  
fx 518 371 2688  
[www.pva.net](http://www.pva.net)