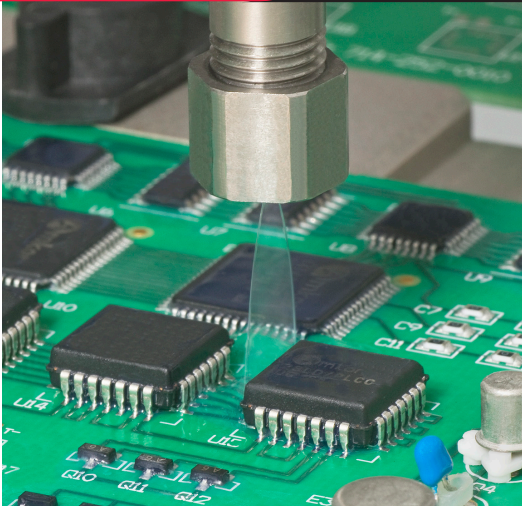




**WHERE
PRECISION
DRIVES
PRODUCTION**



VALVE SPECIFICATIONS

Dimensions

174mm x 19mm x 19mm
(6.86" x 0.75" x 0.75")

Weight

6 oz

Coating Process Speed

Up to 500mm (19.7in)/sec

Pattern Width

8 - 12mm

Viscosity Range

1 cps - 1000 cps

Operating Air Pressure

60 - 100 psi

Maximum Inlet Fluid Pressure

3500 psi

Wetted Components

Stainless Steel, Teflon®, Kalrez®

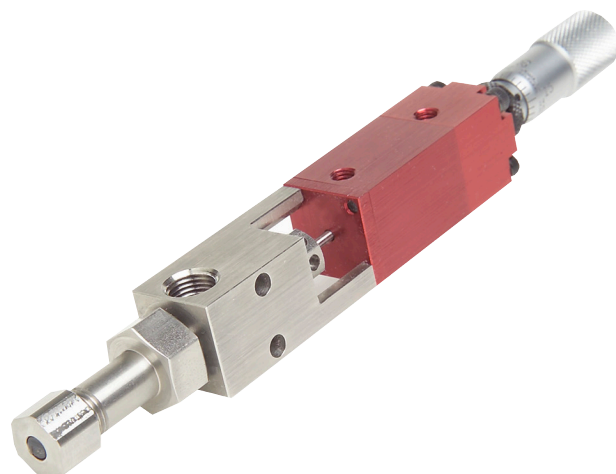
FC100-CF Non-atomized Film Coating Valve

The FC100-CF film coating valve produces a sharp, non-atomized stream of low viscosity fluids and coatings. The resulting precise application process is ideal for solvent based chemistries requiring wet film builds of at least 0.008".

The FC100-CF has many integrated features including:

- Non-atomized coating process with superior edge definition
- 99% material transfer efficiency
- Interchangeable film coat nozzles for variable flow rates
- Micrometer flow adjustment with lock ring
- Rapid coating speed up to 500mm (19.7in)/second
- Divorced valve design prevents material contamination of the air section
- Stainless steel fluid body for superior material compatibility

For more information, please contact PVA at info@pva.net or (518) 371-2684.



FC100-CF Mounting Dimensions

