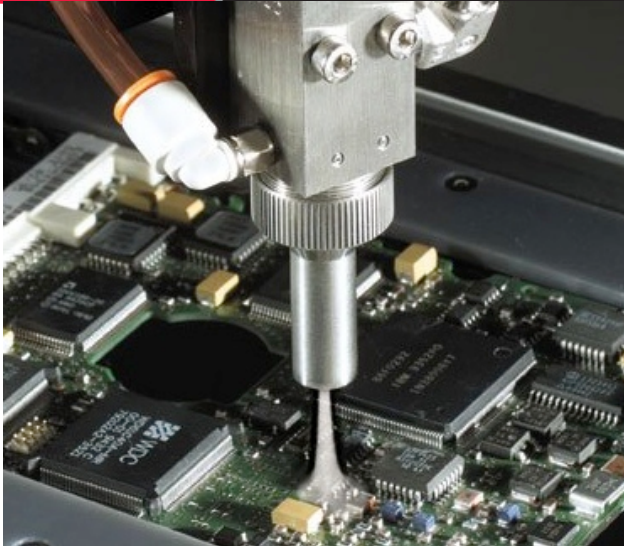




**WHERE
PRECISION
DRIVES
PRODUCTION**



SYSTEM SPECIFICATIONS

Maximum Pallet Weight
3 lbs. • 1.4 kg

Conveyor Speed
0.15 m/min to 24 m/min
(0.5 ft/min to 80 ft/min)

Working Width
51 mm to 457 mm
(2 in to 18 in)

Component Clearance
100 mm (4 in) top and bottom
4.75 mm (0.187 in) in edge carrying (SMEMA)

Conveyor Height
940 mm to 965 mm from floor
(37 in to 38 in) (SMEMA)

Power Requirements
120, 220 VAC +/- 10%, 50/60Hz

Certification
CE certified

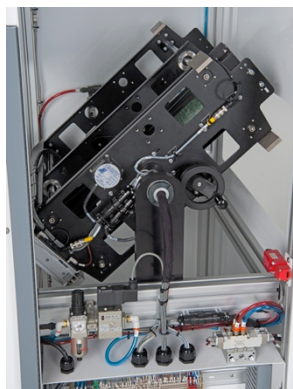
BI2000 BOARD INVERTER MODULE

The BI2000 is a compact inverting module for use with printed circuit boards and pallets within an inline process. While configured in a PVA production line, the BI2000 exposes the underside of an assembly for processing. Once inverted, the assembly can continue on to the next module, or return to the original work-station in a bi-directional mode.

The BI2000 has many integrated features including:

- ▲ Edge belt conveyor with adjustable tension guides
- ▲ Bi-directional conveyor travel
- ▲ Pneumatic inverting mechanism
- ▲ SMEMA communications interface
- ▲ Four-inch top and bottom side component clearance
- ▲ Unitronics PLC/HMI
- ▲ LCD front panel with display screen

For more information, please contact PVA at info@pva.net or 1-518-371-2684.



One Mustang Drive
Cohoes NY 12047
tel 518 371 2684
fx 518 371 2688
www.pva.net

