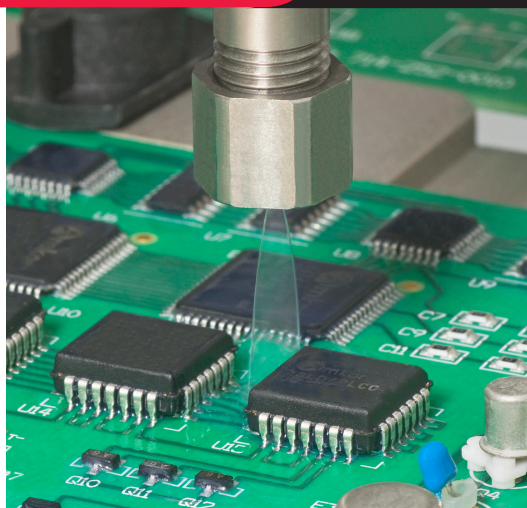




**WHERE  
PRECISION  
DRIVES  
PRODUCTION**



## VALVE SPECIFICATIONS

### Dimensions

174 mm x 19 mm x 19 mm  
(6.86 in x 0.75 in x 0.75 in)

### Weight

6 oz

### Coating Process Speed

Up to 500mm (19.7 in)/sec

### Pattern Width

8 - 12 mm

### Viscosity Range

1 cps - 100 cps

### Operating Air Pressure

60 - 100 psi

### Maximum Inlet Fluid Pressure

3500 psi

### Wetted Components

Stainless Steel, Teflon®, Kalrez®

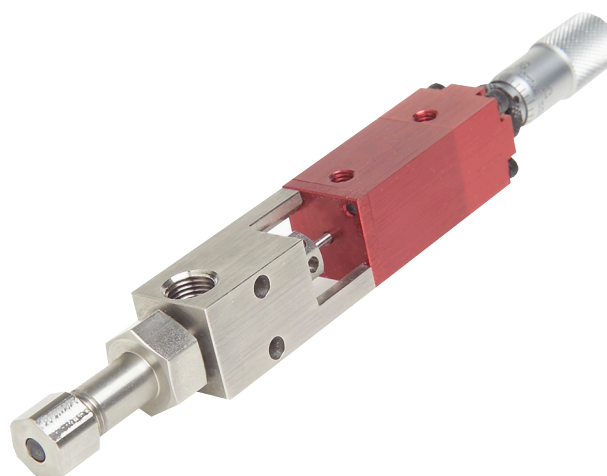
## FC100-CF Non-atomized Film Coating Valve

The FC100-CF film coating valve produces a sharp, non-atomized stream of low viscosity fluids and coatings. The resulting precise application process is ideal for solvent based chemistries requiring wet film builds of at least 0.008 in.

The FC100-CF has many integrated features including:

- Non-atomized coating process with superior edge definition
- 99% material transfer efficiency
- Interchangeable film coat nozzles for variable flow rates
- Micrometer flow adjustment with lock ring
- Rapid coating speed up to 500mm (19.7in)/second
- Divorced valve design prevents material contamination of the air section
- Stainless steel fluid body for superior material compatibility

For more information, please contact PVA at [info@pva.net](mailto:info@pva.net) or (518) 371-2684.



# FC100-CF Mounting Dimensions

