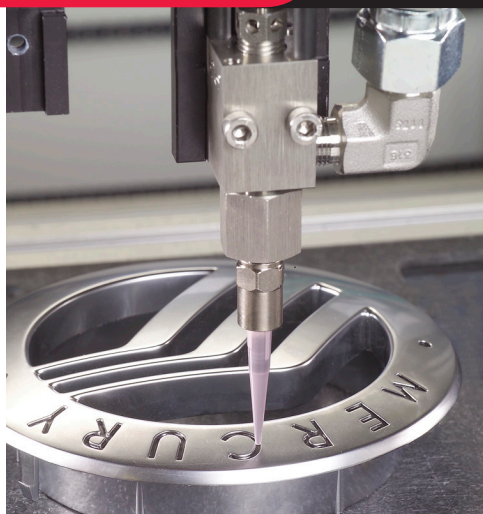




**WHERE
PRECISION
DRIVES
PRODUCTION**



VALVE SPECIFICATIONS

Dimensions

171.5 mm x 19 mm x 19 mm
(6.75 in x 0.75 in x 0.75 in)

Weight

7 oz

Viscosity Range

1 cps - Paste

Operating Air Pressure

60 - 100 psi

Maximum Inlet Fluid Pressure

3500 psi

Wetted Components

Stainless Steel, Teflon®, Kalrez®

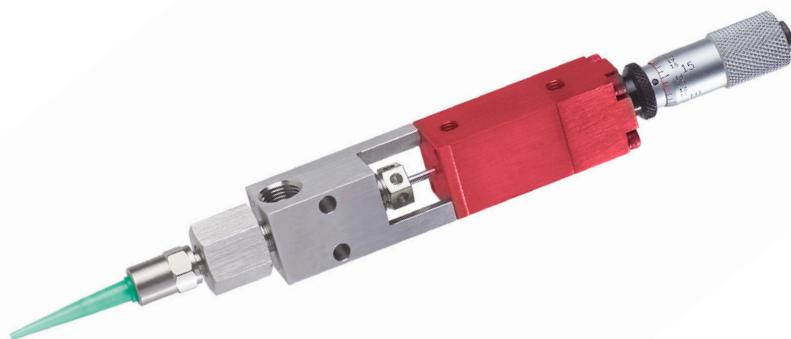
FC100-MC Stainless Steel Dispensing Valve

The FC100-MC is a versatile dispensing valve for single-component bead, dot, potting, or encapsulation projects. The FC100-MC features a lightweight, compact design that makes it an ideal choice for any automated or handheld process. Improving upon the traditional FC100 valve design, the FC100-MC features a micrometer flow adjustment that makes fine tuning of your process easier than ever.

The FC100-MC has many integrated features including:

- 300 series stainless steel fluid body for superior material compatibility
- Micrometer flow adjustment with lock ring
- Divorced valve design prevents material contamination of the air section
- Reversible valve seat
- Spring-assisted valve closure for reliable cycle stops
- Compatible with all Luer-Lok™ needle tip designs
- High inlet pressure rating allows for processing of viscous chemistries

For more information, please contact PVA at info@pva.net or (518) 371-2684.



FC100-MC Mounting Dimensions

