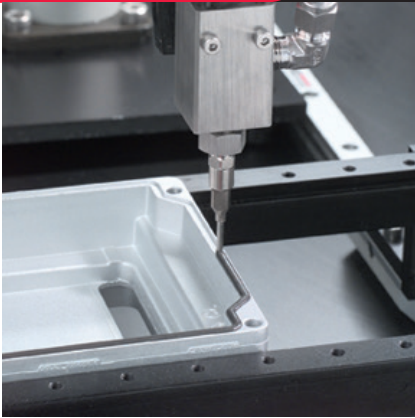




**PVA**

**WHERE  
PRECISION  
DRIVES  
PRODUCTION**



## VALVE SPECIFICATIONS

### Dimensions

201 mm x 29.21 mm x 29.21 mm  
(7.9 in x 1.15 in x 1.15 in)

### Weight

19 oz.

### Viscosity Range

1 cps – Paste

### Operating Air Pressure:

60 – 100 psi

### Maximum Inlet Fluid Pressure:

3500 psi

### Wetted Components

Stainless steel, Viton, Teflon®

## FC300

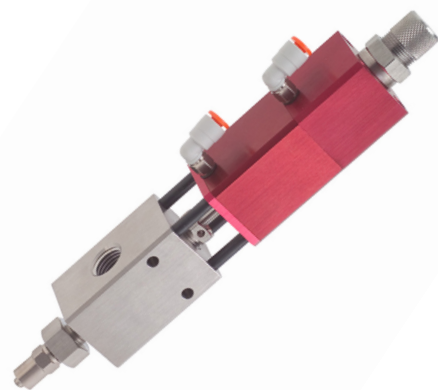
### High Flow Stainless Steel Needle Valve

The FC300 is a versatile high flow dispensing valve for any single component bead, dot, potting, or encapsulation project. Featuring a lightweight, compact design, the FC300 is perfect for both automated and handheld processes in which a high volume of material is dispensed.

The FC300 has many integrated features including:

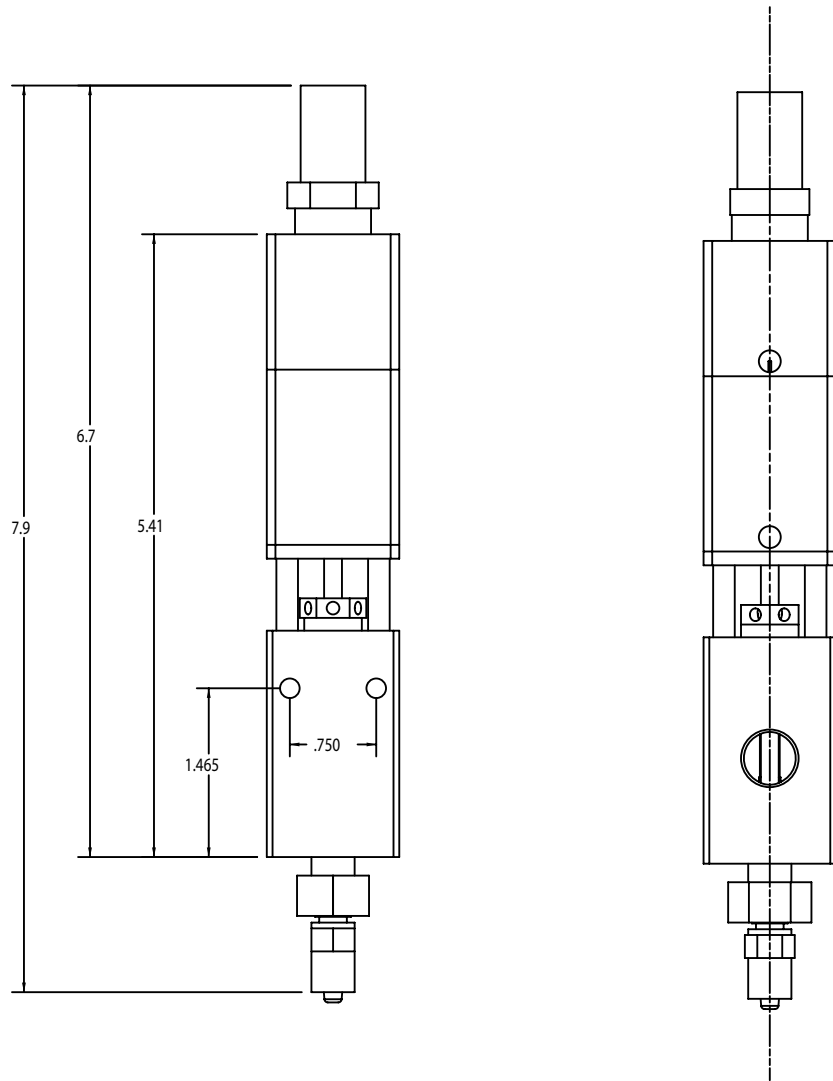
- Divorced valve design prevents material contamination of the air section
- Stainless steel fluid body for superior material compatibility
- 1/4" NPT fluid port allows higher flow rates
- Adjustable flow control
- Spring-assisted valve closure for reliable cycle stops
- Compatible with all Luer-Lok™ needle tips

For more information, please contact PVA at [info@pva.net](mailto:info@pva.net) or (518) 371-2684.



Teflon® and Kalrez® are registered trademarks of Dupont.

# FC300 Mounting Dimensions



*All dimensions provided in inches*