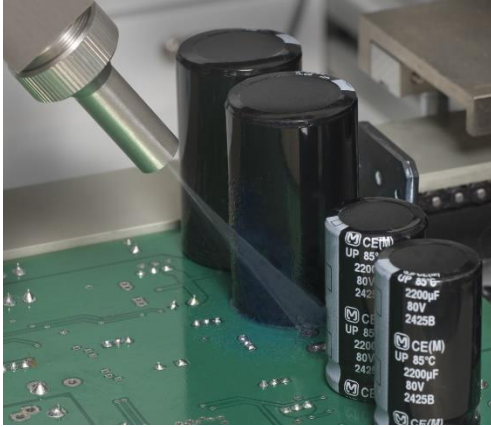




INNOVATION.PRECISION.EXCELLENCE.



System Specifications

Spray Valve:
FCS300-R

Spray Pattern:
0.25" – 2" diameter (typical)

Pressure Tank:
PVA-2LTUV

Fluid Viscosity Range:
1 cps – 20,000 cps (self-leveling fluid)

Wetted Components:
Stainless Steel, Teflon®, Kalrez®

Facilities Requirements:

- 80 psi (5.5 bar) air pressure
- No electrical



FCS300-R-2LT-H Handheld Coating System

This complete manual spray system is typically used for handheld conformal coating applications. It utilizes the FCS300 spray valve mounted to a pneumatic trigger handle for simple activation and accurate control of the atomized fluid.

Supplied with a 2-liter pressure tank, it can hold most industry standard 1-liter bottles, eliminating the need to pour fluid into a tan which can introduce moisture and air.

Complete systems are supplied with all necessary fluid and air fittings and tubing to run out of the box.

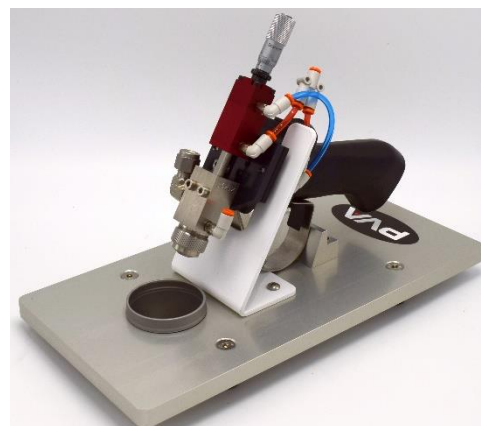
Applications & Features:

- Manual conformal coating system for PCBs
- Low volume, low pressure atomized spray valve
- 0-15 psi precision atomizing air regulator
- Hand trigger activation

Optional Equipment:

- PV106-S valve stand with purge cup
- FX800 fume extraction system

For more information, please contact PVA at info@pva.net or contact your local representative.



PV106-S

Headquarters
One Mustang Drive | Cohoes, NY 12047
tel +1 518 371 2684 | fx +1 518 371 2688
www.pva.net | info@pva.net