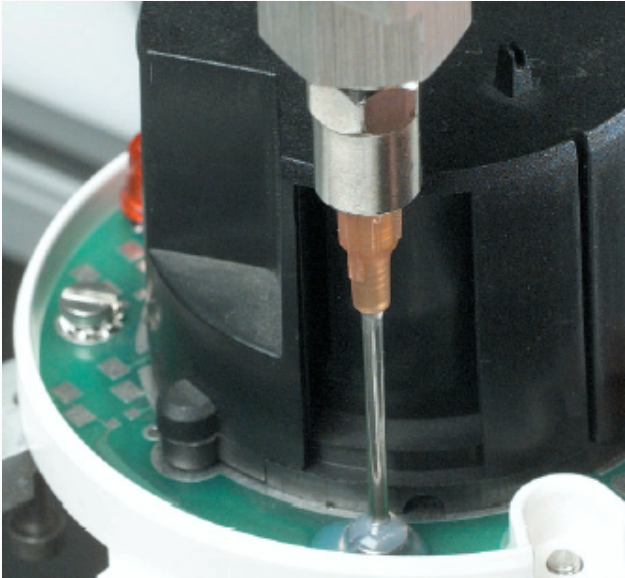




**WHERE  
PRECISION  
DRIVES  
PRODUCTION**



### **MV300 Shot Size Range**

0.010 cc to 0.100 cc

### **VALVE SPECIFICATIONS**

#### **Dimensions:**

203 mm x 29.2 mm x 29.2 mm  
(7.99 in x 1.15 in x 1.15 in)

#### **Weight**

8 oz

#### **Viscosity Range**

1 cps – Paste

#### **Operating Air Pressure**

60 – 100 psi

#### **Maximum Inlet Fluid Pressure**

300 psi

#### **Wetted Components**

Stainless steel, Delrin, Kalrez®, Teflon®

### **MV300**

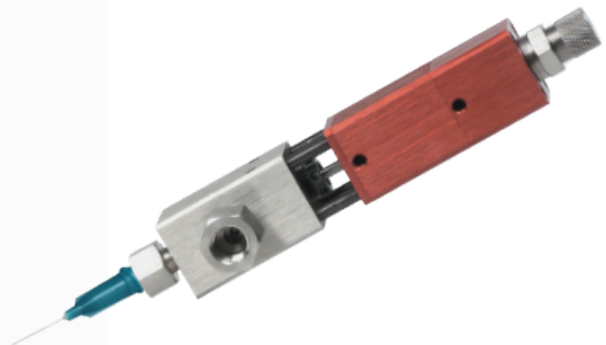
### **POSITIVE DISPLACEMENT DISPENSING VALVE**

The MV300 is a true positive displacement metering valve capable of dispensing deposits of material in a highly accurate process. The deposit volume is determined by the valve's stroke adjustment setting and is not affected by variations in viscosity or material pressure. The MV300 is compatible with all PVA automated platforms.

The MV300 has many integrated features including:

- ▲ 0.010 cc to 0.100 cc shot size
- ▲ Divorced valve design prevents material contamination of the air section
- ▲ Inlet and outlet check valves provide precise metering of material
- ▲ Adjustable stroke permits shot size modification
- ▲ Stainless steel fluid section for optimum material compatibility
- ▲ Lightweight aluminum air section

For more information on PVA's dispensing capabilities, please contact us at [info@pva.net](mailto:info@pva.net) or 1-518-371-2684.

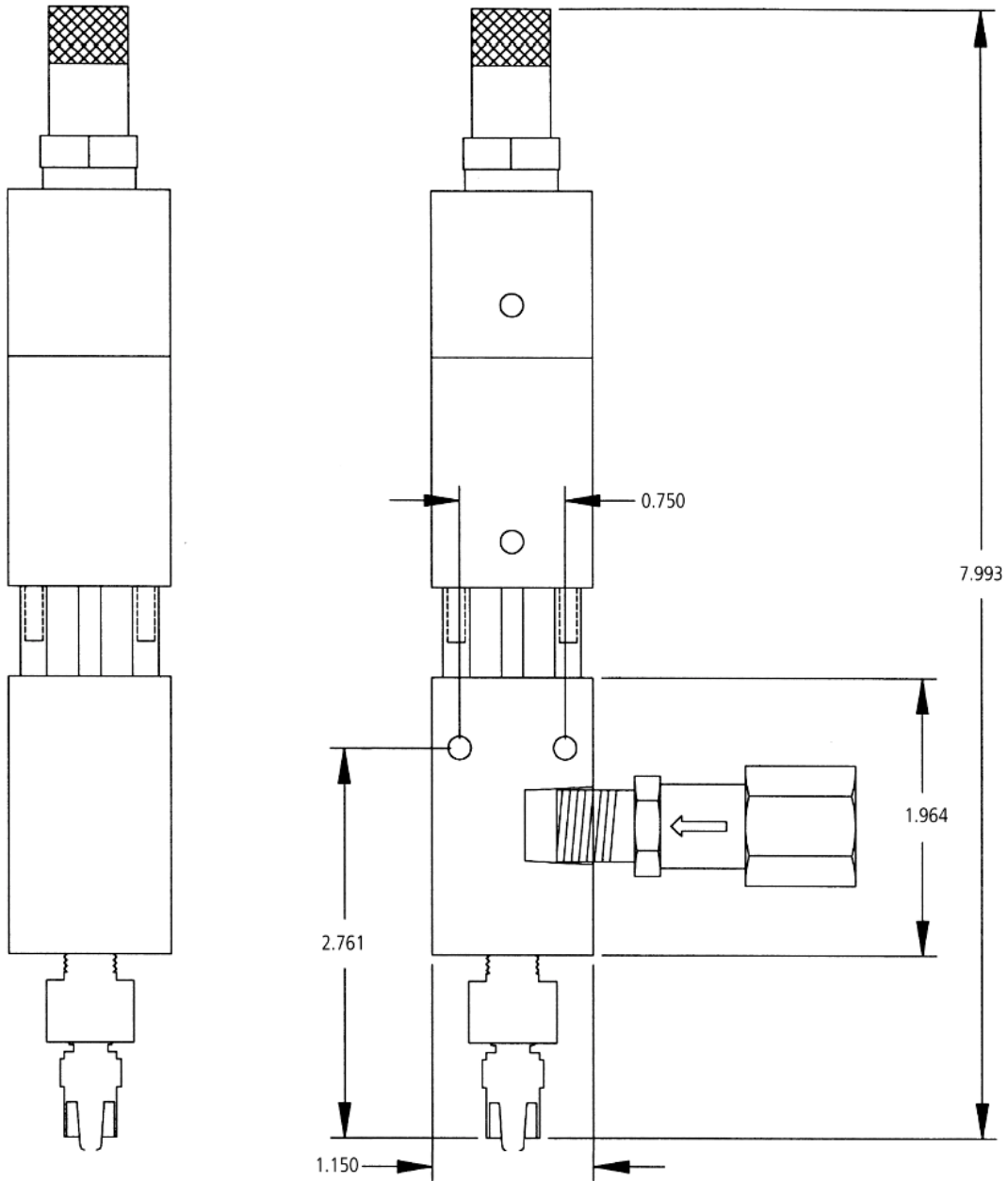


One Mustang Drive  
Cohoes NY 12047  
tel 518 371 2684  
fx 518 371 2688  
[www.pva.net](http://www.pva.net)

Teflon® and Kalrez® are registered trademarks of Dupont.

Jan. 2012

# MV300 Mounting Dimensions



All dimensions provided in inches