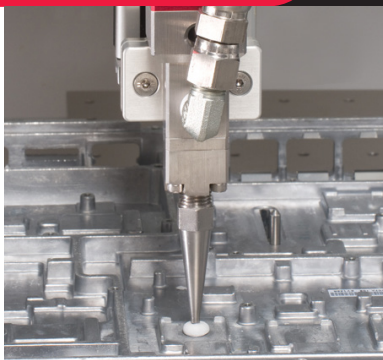




**WHERE  
PRECISION  
DRIVES  
PRODUCTION**



## PRODUCT SPECIFICATIONS

### Dimensions

38mm x 38mm x 152mm  
(1.5" x 1.5" x ~6.0")

### Weight

510g (18oz)

### Operating Air Pressure

60-100 psi (4.1-6.9 bar)

### Maximum Fluid Pressure

1000 psi (69 bar)

### Wetted Components

Carbide, Stainless Steel, Viton®, Urethane,  
Nylon (Steel Rod Optional, SB300)

### Inlet

1/4" NPT Female

### Outlet

Male Luer Lock Adapter  
(1/4" NPT Female Optional)

## SB300 Series

### High Flow Dispense Valve

#### SB300-C Dispense Valve

The SB300-C is a high pressure "snuff back" dispense valve that is designed for applying medium to high viscosity fluids, including thermally conductive pastes and gap fillers, which contain aggressive fillers.

A special carbide rod is used in combination with lip seals to resist wear against aggressive fillers, making this valve suitable for applications including dot dispensing, gasketing, filling and potting.

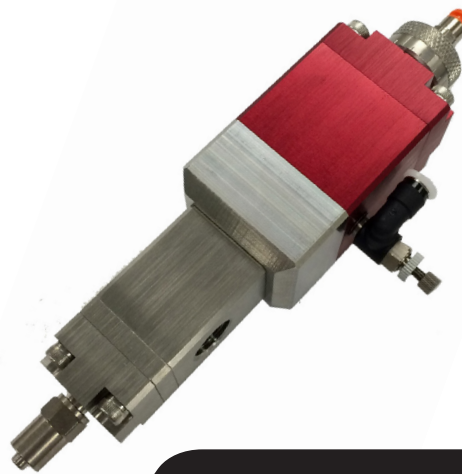
#### SB300 Dispense Valve

For less aggressive fluids, without fillers, such as RTV, silicone, sealants, adhesives, gels and pastes the (standard) SB300 Dispense Valve is available with a tool steel rod.

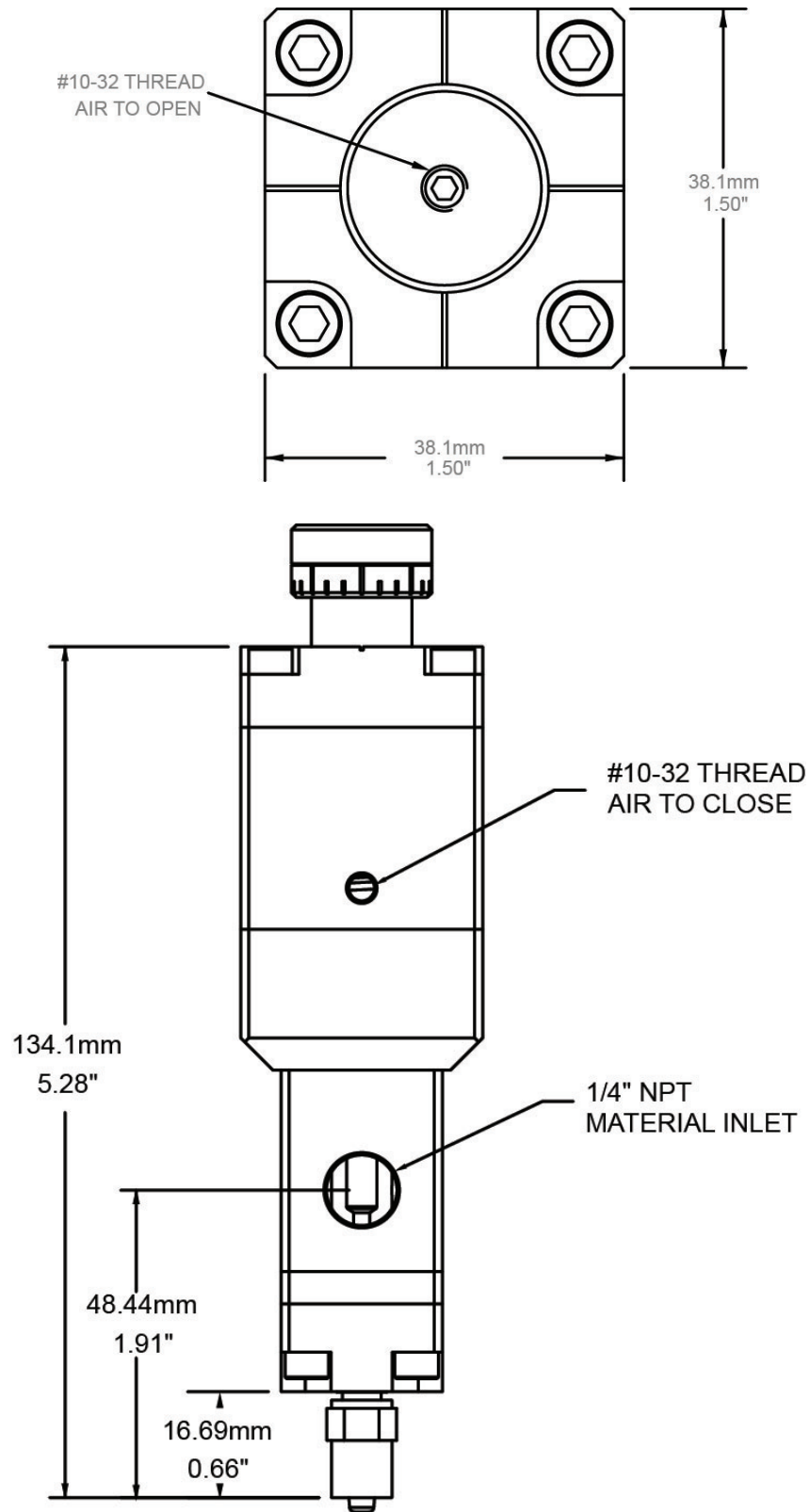
The SB300-C features include:

- Achieves flow rates over 2x higher than FC300 Series Valves
- Adjustable snuff back shutoff
- Stainless Steel fluid body
- Low maintenance design
- Interchangeable outlet – Luer or female NPT

For more information, please contact PVA at [info@pva.net](mailto:info@pva.net) or (518) 371-2684.



# SB300 High Flow Dispense Valve



*All dimensions provided in inches*